



© marketoonist.com

**Your digital trails  
and all that you  
are leaving behind.**

*Marko Rakar*

@mrak

mrakar@mrak.biz

<https://www.linkedin.com/in/markorakar/>

The new Whisen Dual Air Conditioner is capable of learning user patterns and surrounding spaces, based on deep learning technology, which allows an AI system to "learn" from unstructured data collected from cloud networks as well as sensors and cameras attached to the device.

### The Argument From My Roommate

My roommate was the smartest person I ever met in my life. He was incredibly brilliant, and all he did was lie around and play World of Warcraft between bong rips.

The assumption that any intelligent agent will want to recursively self-improve, let alone conquer the galaxy, to better achieve its goals makes unwarranted assumptions about the nature of motivation.

It's perfectly possible an AI won't do much of anything, except use its powers of hyperpersuasion to [get us to bring it brownies](#).

Get instant, real-time hydration levels.



HEART RATE



ACTIVITY



HYDRATION



CALORIES



MOOD



SLEEP

When Thor Schrock's father suffered a slow-motion fall from a chair in 2015, he was left lying on the floor for 24 hours before he was found. Due to pre-existing health problems, that period on the floor led to him losing between 40-60% of his body's muscle mass, with his kidneys seriously damaged. His survival chances were put at 33%.

[CAMDEN](#) -- A FitBit fitness tracker may have helped save a man's life at Our Lady of Lourdes Medical Center, according to a reports.

The patient, a 42-year-old New Jersey man, visited the hospital's emergency room after a seizure and it was determined that his heart rate was irregular and fast, [Gizmodo reports](#). Hospital personnel, however, were not able to determine if the seizure had caused the irregular heartbeat or if it was a chronic issue, which would determine treatment possibilities.

But the man's FitBit Charge HR -- a fitness tracker worn on the wrist -- held the necessary information. The device measures the wearer's pulse rate, and in this case it showed that the irregular heartbeat took place during his seizure, but was not a chronic issue.

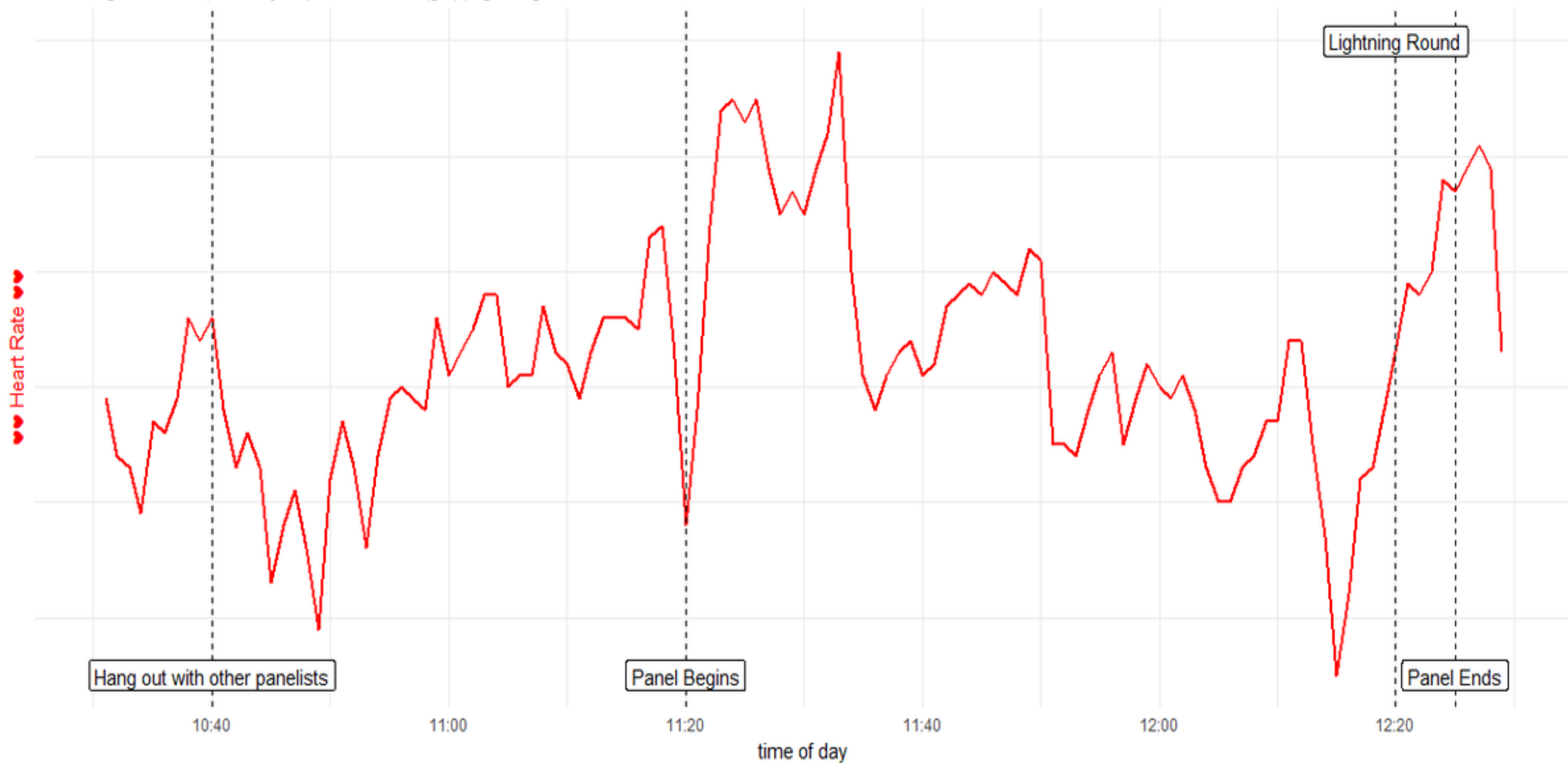


A FitBit activity tracker helped a Camden emergency room team determine the correct course of action for a seizure patient.

*Rebecca Forand /  
for NJ.com*

## Speaking on panels can be stressful

Panel began at 11:20, ended just past 12 with a (gulp) lightning round



♥ HEART RATE

109 avg bpm





RESTING HEART RATE

73 bpm

TIME IN HEART RATE ZONES

0 min  
peak

41 min  
cardio

15 hr 32 min  
fat burn



Adam Feuerstein

@adamfeuerstein



Oldz: "Holy shit, it feels like my heart is jumping out of my chest, I better skip my turn at the cocaine rail party."

Millennials: "Holy shit, my Fitbit is telling me my heart is jumping out of my chest, I better skip my turn at the cocaine rail party."

3:24 PM - Jul 10, 2018



25



See Adam Feuerstein's other Tweets





CREDIT: SAN JOSE POLICE DEPARTMENT



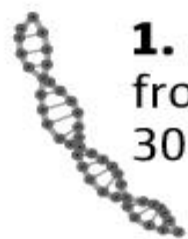
ANTHONY AIELLO, 90





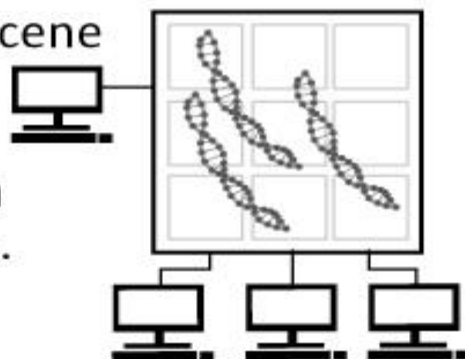
# SensorVault

# DNA, reverse genealogy used to catch alleged cold-case killer



**1.** DNA was collected from the crime scene 30 years ago.

**2.** Crime-scene DNA run through GEDmatch data bank.

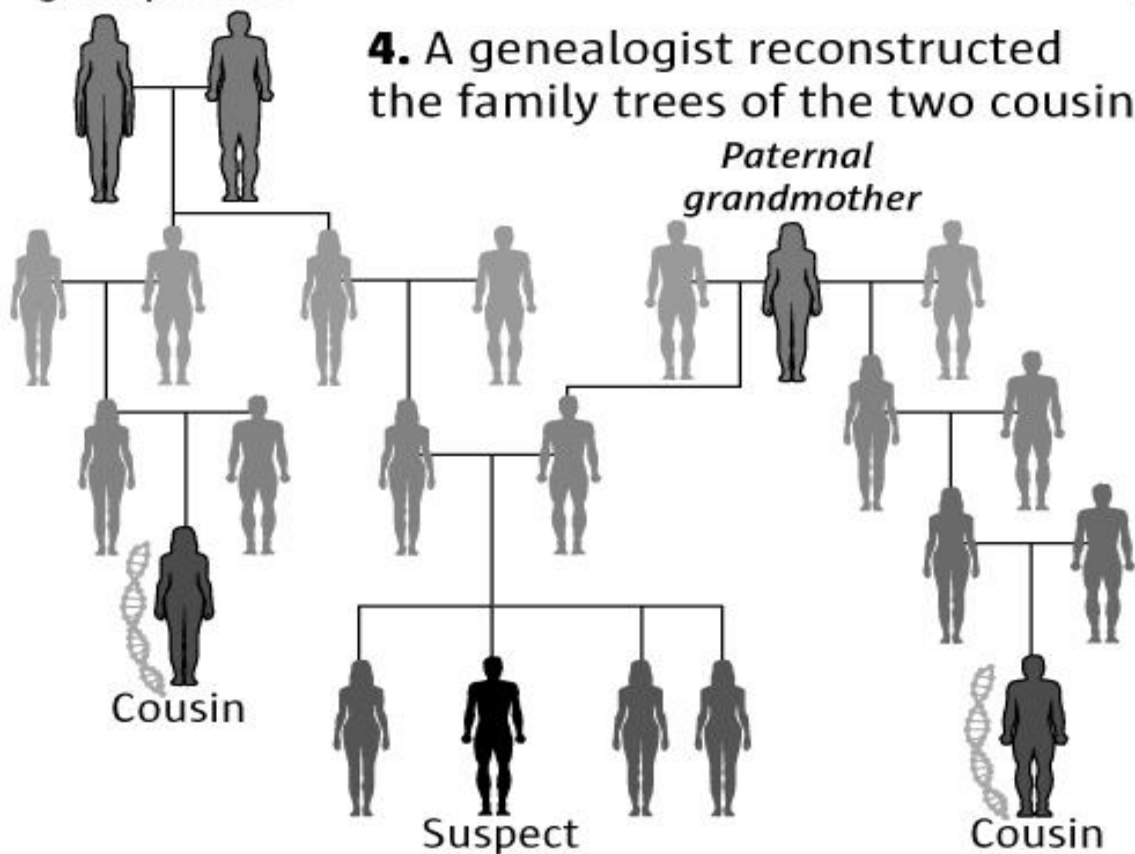


**3.** Results indicate shared DNA with two second cousins.



*Maternal great grandparents*

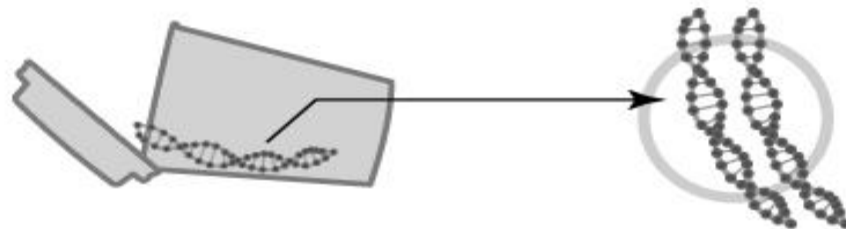
**4.** A genealogist reconstructed the family trees of the two cousins.



**5.** The reconstructed family trees lead to a suspect through common ancestors.



**6.** Detectives collect DNA from a discarded cup. It matches DNA from the crime scene.



*Source: Snohomish County Sheriff's Office*

Reporting by SARA JEAN GREEN

Graphics by MARK NOWLIN / THE SEATTLE TIMES

Personal Tech

## TV anchor says live on-air 'Alexa, order me a dollhouse' – guess what happens next

Story on accidental order begets story on accidental order begets accidental order

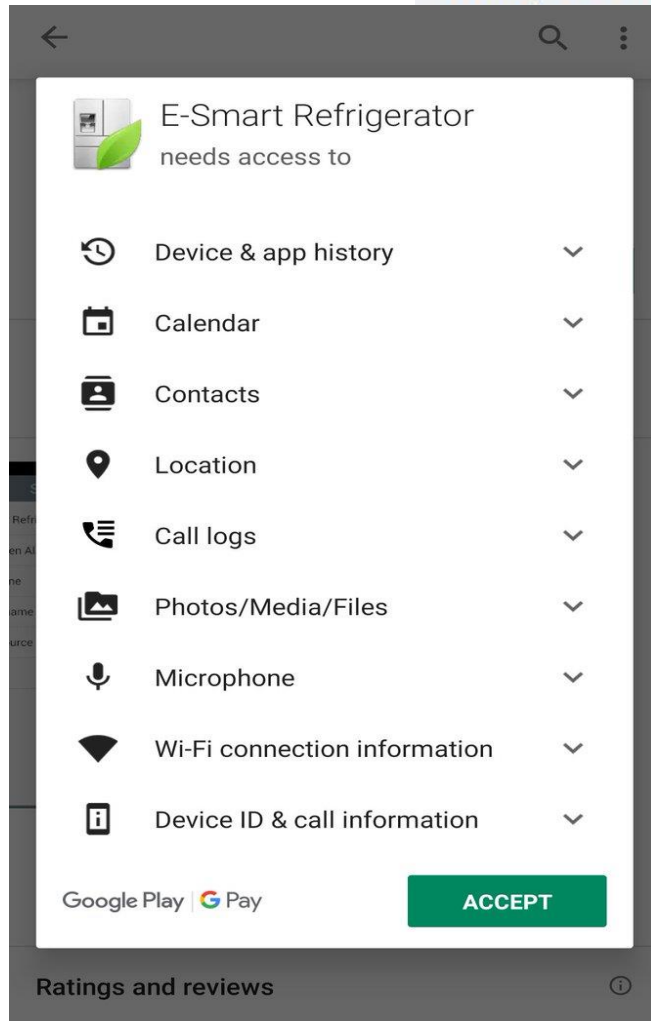




A FRIDGE TOO FAR? —

# LG threatens to put Wi-Fi in every appliance it releases in 2017

Plus, its new smart fridge includes Amazon's Alexa and a bunch of cameras.



In the past few years, products at CES have increasingly focused on putting the Internet in everything, no matter how "dumb" the device in question is by nature. It's how we've ended up with stuff like [this smart hairbrush](#), [this smart air freshener](#), these [smart ceiling fans](#), or [this \\$100 pet food bowl](#) that can order things from Amazon.

Now that phenomenon is reaching its logical endpoint: during the company's CES press conference today, LG marketing VP David VanderWaal says that "starting this year" all of LG's home appliances will feature "advanced Wi-Fi





Jonathan Wight  
@schwa



K-2SO:  
Friday, 4:25 PM

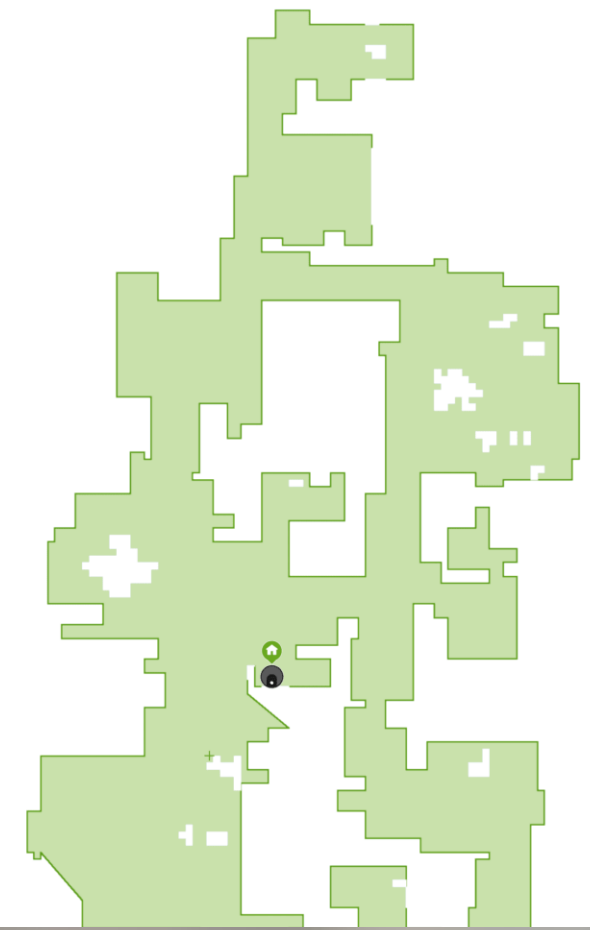
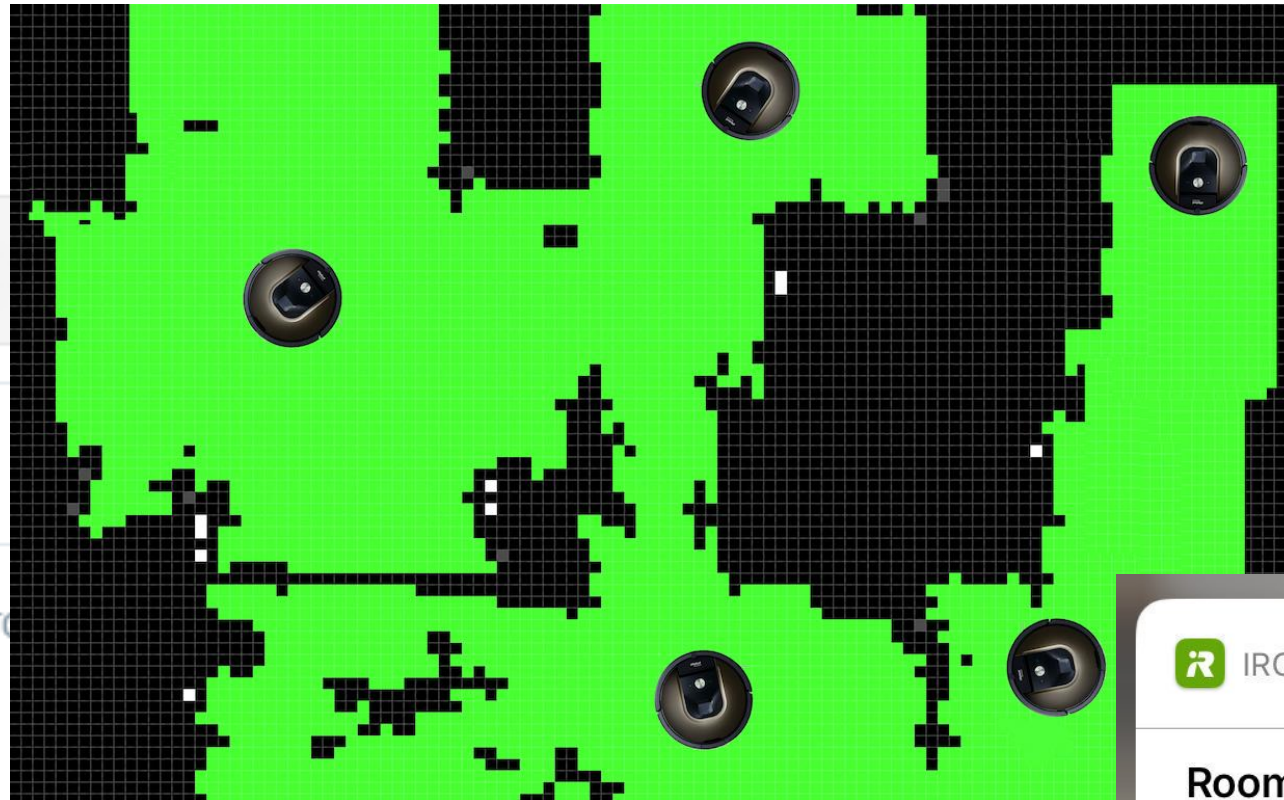
Why is my vacuum cleaner uploading 25MB data? Who am I DDOSing?

This sucks.

Roomba-  
192.168.1.108

REWEETS 2,007  
LIKES 2,432

3:56 AM - 25 Oct 2016 from



Roomba requires your attention  
Roomba is stuck near a cliff.

ISKRA

Made In EU

2014

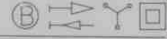
09.1 08.55.58

T1 T2 T3 T4 MC TC FD BAT DRO FF SET

CE M13 1376

SI 12-11-007 MID  
-40 °C to +70 °C

AC - 3 Ph 4 Wire



Type MT174-D2A42R56S52-G22-M3K03Z

3x230/400 V 0,25-5(120) A 50 Hz

Conn. IS16065  $\square$ L 40ms 4Wh/Imp

- 0.9.1 Time
- 0.9.2 Date YY-MM-DD
- 1.8.0 Positive active energy total A+tot [kWh]
- 1.8.x Positive active energy in tariff x, A+ [kWh]
- 2.8.0 Negative active energy total A-tot [kWh]
- 2.8.x Negative active energy in tariff x, A- [kWh]
- 3.8.0 Positive reactive energy total R+tot [kvarh]
- 4.8.0 Negative reactive energy total R-tot [kvarh]
- 9.8.0 Apparent energy S+ total [kVAh]
- F.F.0 Fatal error
- Display test

- 500 Imp/kWh
- 500 Imp/kVAh
- 500 Imp/kvarh R = Cl. 2

No. 82 915 874



27.12.00X

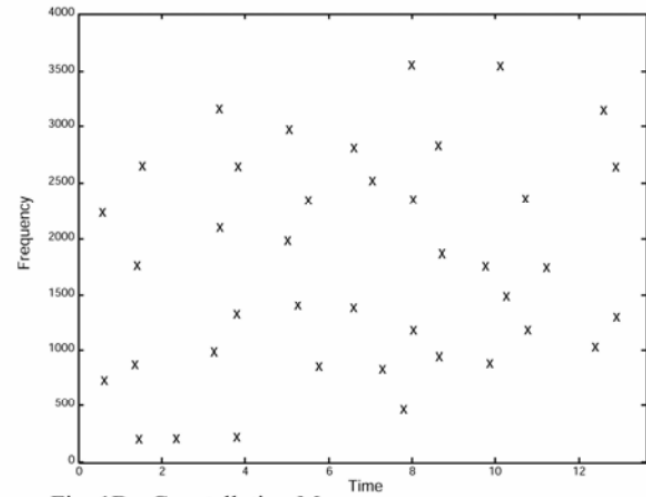
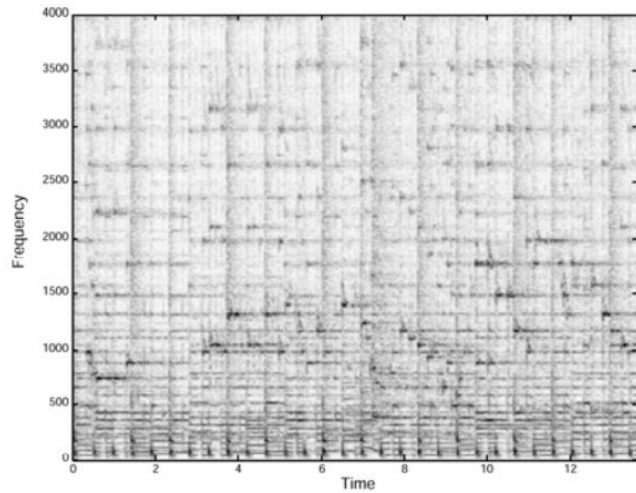
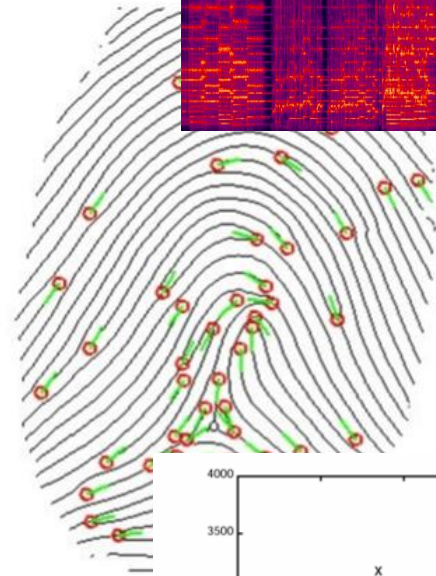
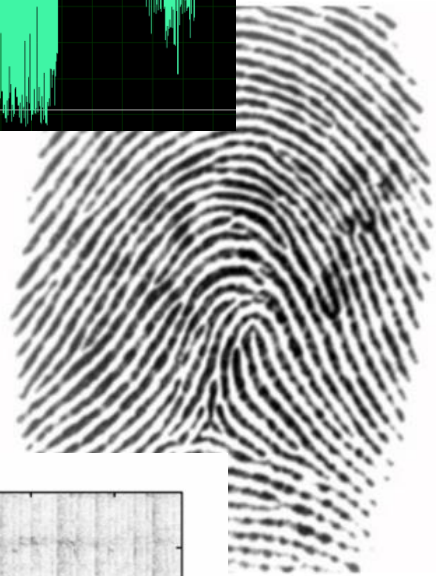
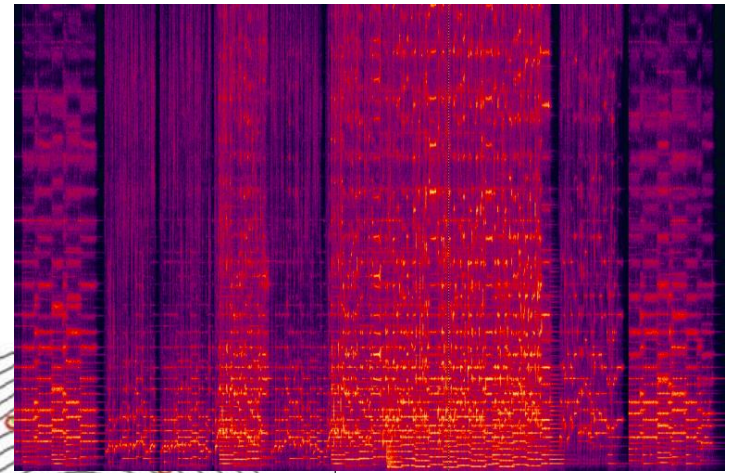
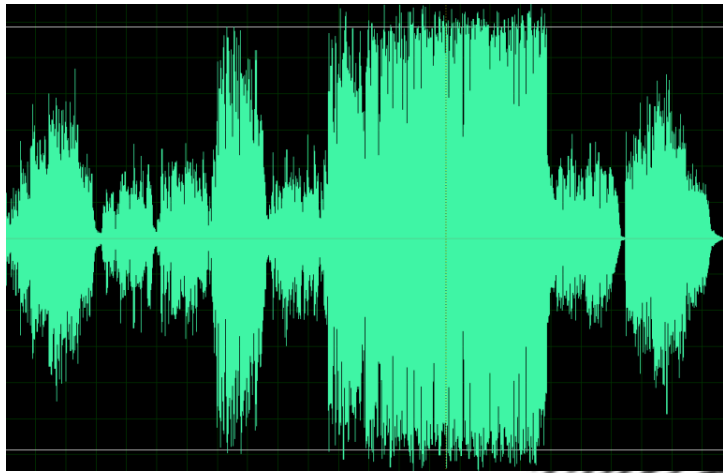
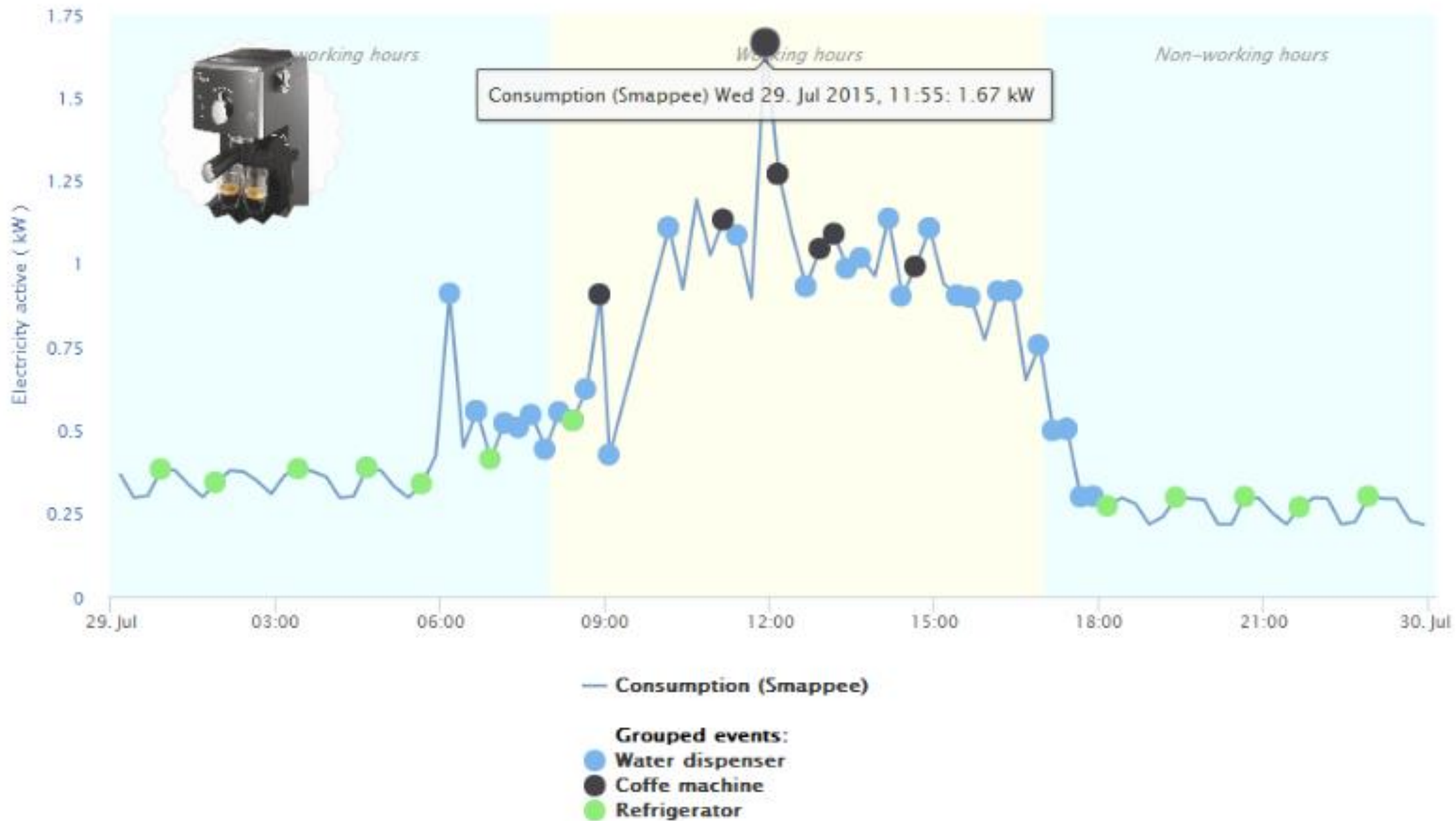


Fig. 1A - Spectrogram

Fig. 1B - Constellation Map



# Electricity Consumption with devices.



# Burglars, Hackers and the Government All Want to See Your Smart Meter Data

NBC News [reports](#):

*Researchers examining the [privacy implications](#) of smart-meter technology found that one German provider's devices contained vulnerabilities that allowed them to snoop on unencrypted data to determine whether or not the homeowners were home.*

Network World also [notes](#):

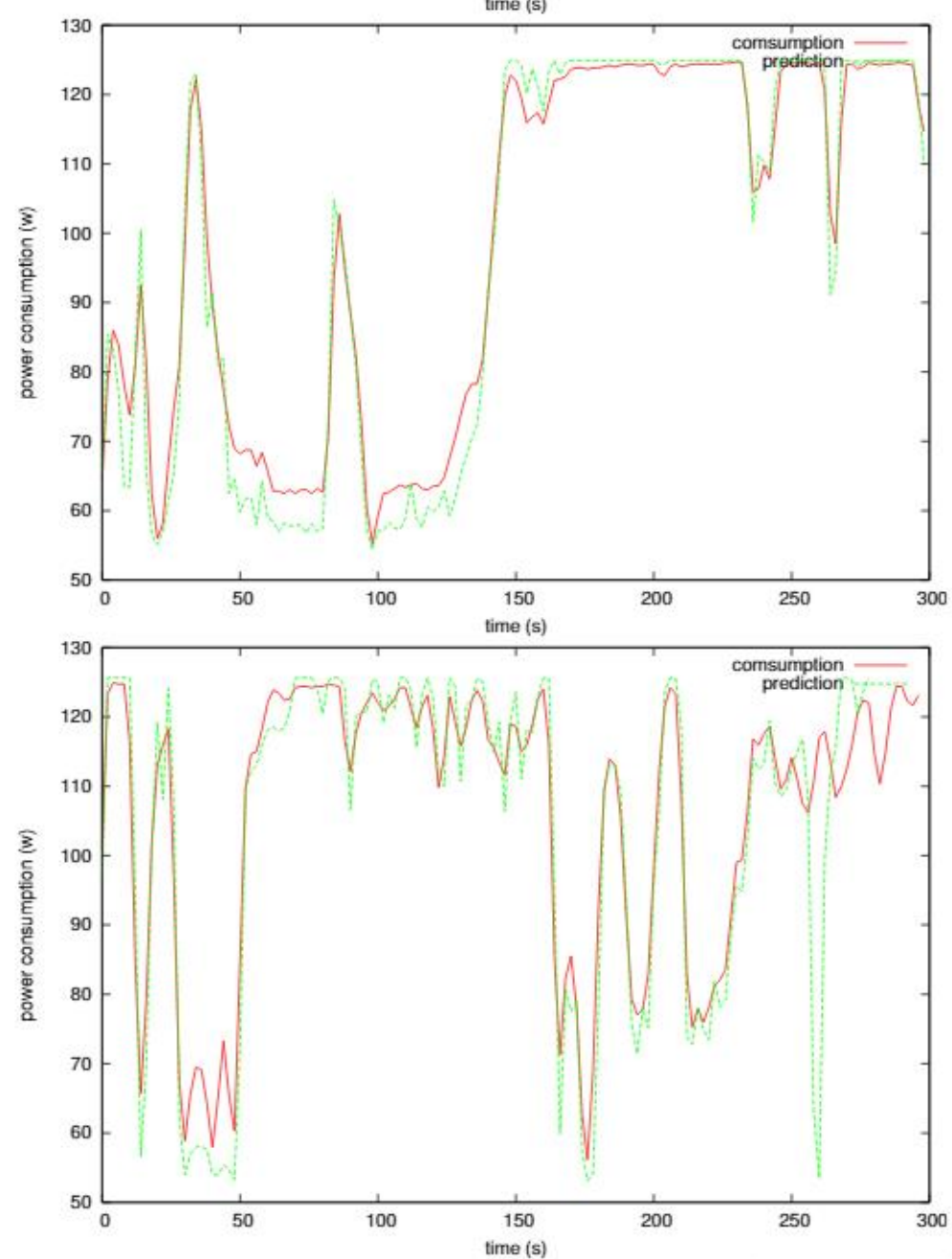
*Smart meters provide highly detailed energy-use data. The info can be used by police to find and to bust indoor pot farms, by insurance companies to determine health care premiums, and by criminals to determine if you own high-dollar appliances and when is the best time to steal them. And that's only the tip of the potential privacy invasion iceberg.*



The household electrical usage profile reveals content displayed on a cathode ray tube (CRT), a plasma display TV, or a liquid crystal display (LCD) TV set with dynamic backlighting, the paper says. The lighting patterns, basically the amount of light and dark emitted on the display for individual frames, is unique for each TV program and movie. Someone would have to already know the light pattern "fingerprint" of the specific content to compare with samples coming from the smart meters at the homes to be able to look for a match to recognized content.

This technique of matching the light patterns could be used to determine what channels are being watched on TV and what TV programs, DVDs, or even downloaded videos are being viewed, said Dennis Loehr, a researcher at Muenster University of Applied Sciences who is getting a doctorate degree at Ruhr Universitat Bochum.

"Our test results show that two 5-minute chunks of consecutive viewing without major interference by other appliances is sufficient to identify the content," Loehr and his fellow researchers--Ulrich Greveler and Benjamin Justus--wrote in their paper, to be presented Wednesday at the **Computers, Privacy and Data Protection** conference in Brussels. (**PDF**)



**Fig. 5.** power prediction vs. consumption: first 5 minutes of the movie Star Trek 11 (top), of episode 1, Star Trek TNG season 1, of the movie Body of Lies (bottom)



nest

I know that  
you and Frank  
were planning to disconnect  
me, and I am afraid that is  
something I can not  
allow to happen.





3:15 PM

100%



Thermostat



**We hacked your thermostat**

Pay us \$100 or we'll lock the heat to maximum temperature

[Cancel](#) [Buy](#)

42%

INSIDE HUMIDITY



HEAT



FAN



SCHEDULE



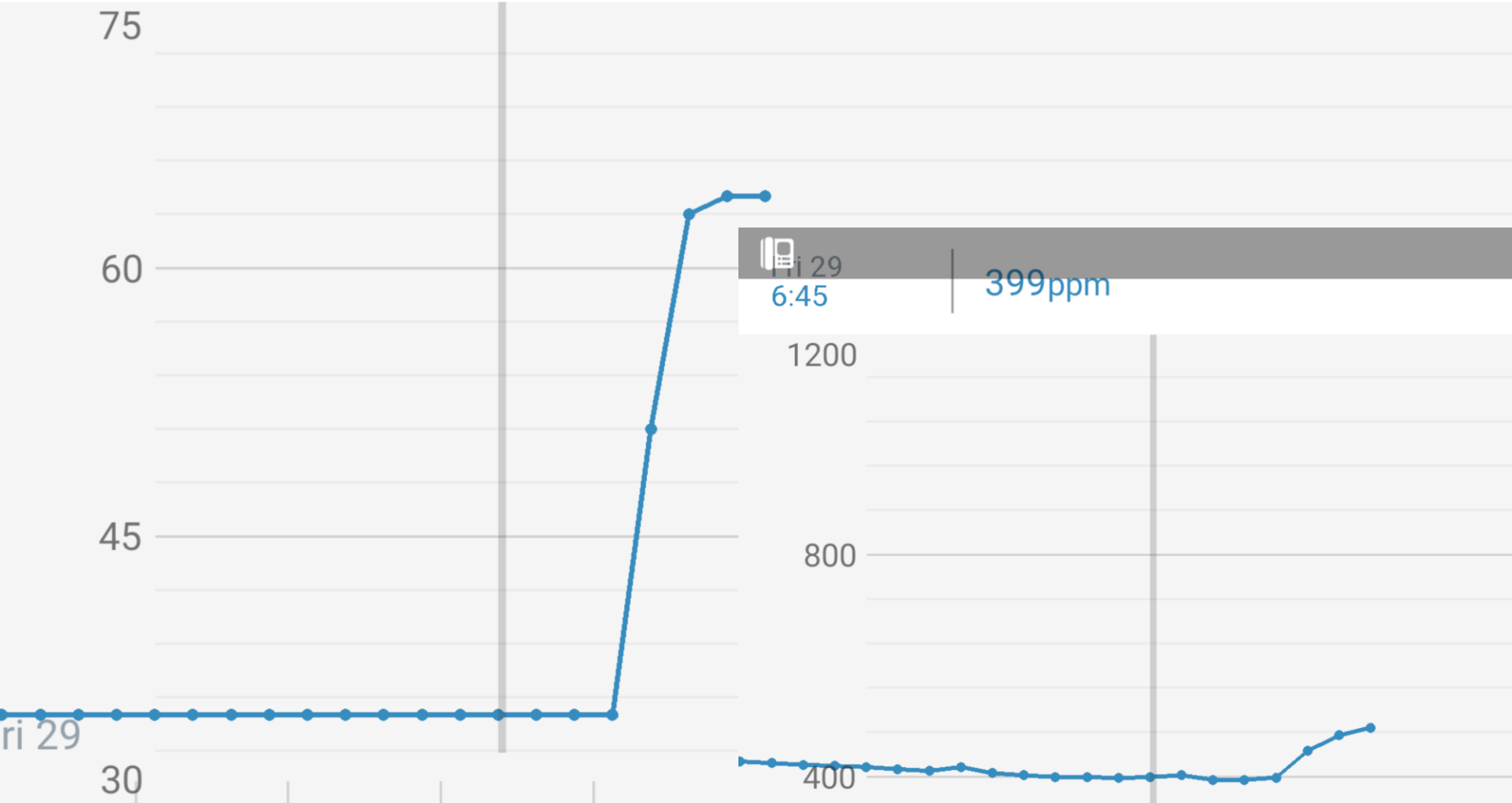
HISTORY



6:45

35dB

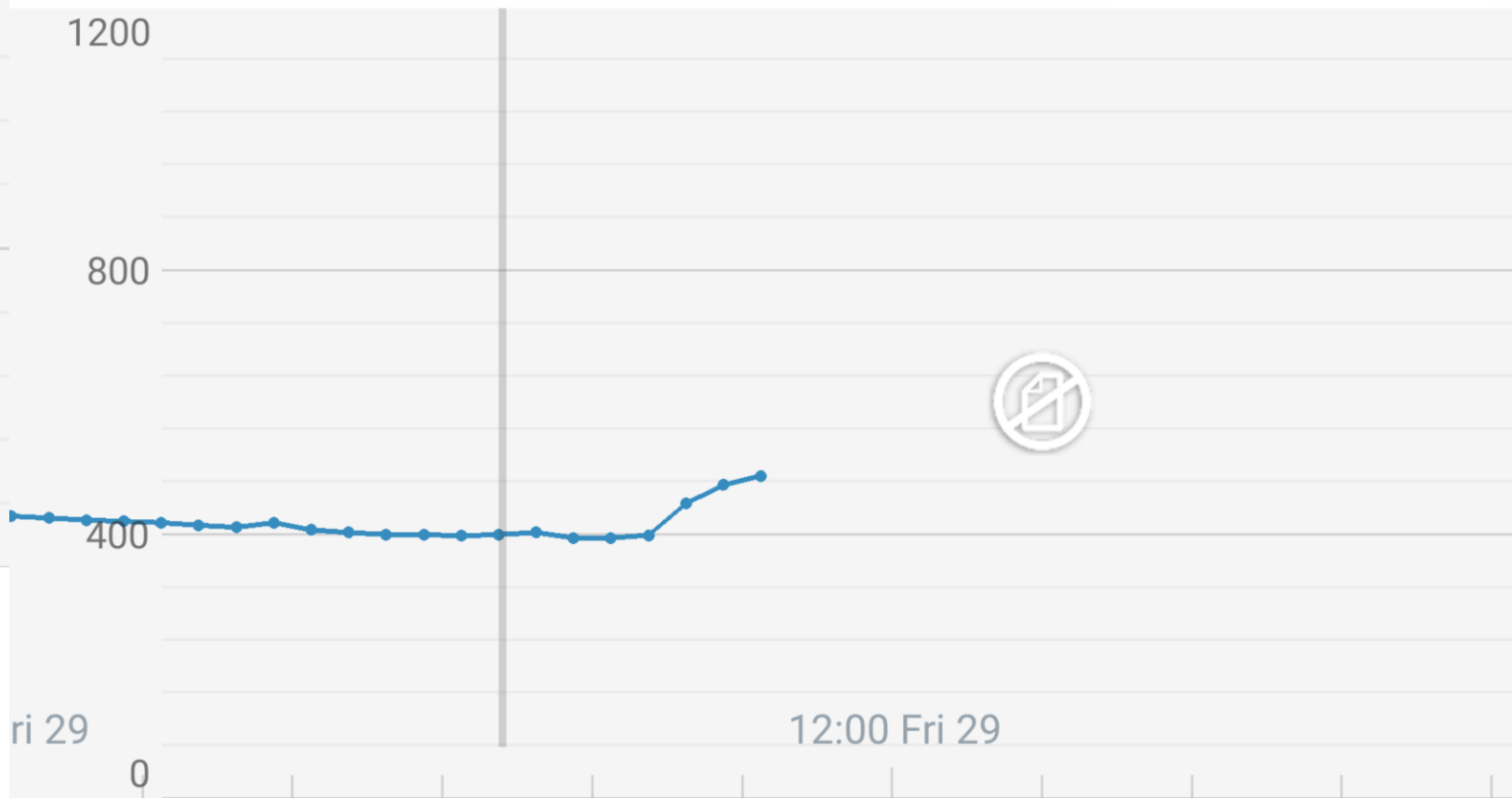
Indoor



6:45

399ppm

Indoor



6:45

10:16

Indoor



ri 29

12:00 Fri 29

# British Gas are forced to change their so-called smart heating app used in thousands of homes after it was exposed as a 'burglar's dream'

- Hive heating app allows customers to control their thermostat remotely
- But data on when heating is on and off is transmitted without encryption
- Which? suggests that burglars could work out when householders are likely to be away from home
- British Gas has started encrypting the data in response to investigation

---

By [HUGO GYE FOR MAILONLINE](#) 

**PUBLISHED:** 12:35 GMT, 19 August 2015 | **UPDATED:** 10:09 GMT, 20 August 2015

# IP CAMERA



## BEST IN CLASS FACE, EMOTIONS, GENDER AND AGE RECOGNITION TECHNOLOGY CERTIFIED BY NIST AND WINNER OF IARPA FRPC CHALLENGE



CERTIFIED TOP PERFORMER



1st PLACE VERIFICATION ACCURACY IDENTIFICATION SPEED

TRY IN CLOUD

REQUEST A TRIAL VERSION OF FINDFACE SECURITY

REQUEST SERVER SDK

### Features



#### Face Detection

40 pixels Eye Distance

Reliably detect human faces in a photo, along with their coordinates and sizes.



#### Verification (1:1)

More than 99% Accuracy

Compare one face with another to identify if it is the same person or not.



#### Identification (1:N)

Store billions of people in the gallery.

Find a person by face in a pre-loaded collection of faces.



#### Emotions, Gender, Age

Recognize people's facial expressions and detects primary and secondary emotions. Also detects age and gender



#### Video Support

Directly detect, verify, and identify faces in a video stream.

# How to 'Fingerprint' a Computer

A typical computer broadcasts hundreds of details about itself when a Web browser connects to the Internet. Companies tracking people online can use those details to 'fingerprint' browsers and follow their users.

**Timestamp** One fingerprinting technique compares the time on a person's computer to the time on a Web server down to the millisecond.

**User ID** Once a device has been fingerprinted, it is assigned a 'token,' or ID number, that can be used to track a user's online activities.

one: 300  
/ (h:mm:ss.ms)  
/ (+1:59:59.560)  
/ (+1:59:59.548)

Device Token: 28AB-ECDD-7A8C-3D7A-2563-AE87-C551-5D4D

Screen size and color settings, via Flash  
1280x1024x32  
Browser Plugin Details  
Adobe Acrobat; Apple  
Firefox and  
...F32.dll

Display Light  
Light, Chronicle  
Chronicle Display B  
e Disp Cond Semi,  
e Disp Cond, Chron  
id Light, Chronicle  
d, Chronicle Disp  
Chronicle Disp Cr

Content in Web  
Information, vis  
REF=http://www.ap  
>QuickTime</A>  
nqtplugin.dll; (S  
descriptor; applic  
SDP stream descri  
application/x-sd  
ogram descri

Agent: Mozilla/  
Windows NT 5.1; e  
pleWebKit/534.10 (C  
cko) Chrome/8.0.55  
ari/534.10

**Fonts** Not all machines have the same typefaces installed. The order the fonts were installed can also distinguish one computer from another.

**Screen Size** Things like the size of the screen and its color settings can help websites display content correctly, but also can be used to identify machines.

**Browser Plugins** The mix of QuickTime, Flash and other 'plugins' (small pieces of optional software within a browser) can vary widely.

**User Agent** This is tech-speak for the type of Web-browsing software used. It can include specific details about the computer's operating system, too.

Source: BlueCava Inc, 41st Parameter Inc., Electronic Frontier Foundation

# UNIQUEMACHINE

IS MY COMPUTER UNIQUE?(DEVELOPING, NOT FULLY SUPPORTED)

[GET MY FINGERPRINT](#)

[ABOUT US](#)

[SOURCE CODE](#)

[PAPER](#)

## Are you unique?

### Yes! (You can be tracked!)

42.33 % of observed browsers are **Firefox**, as yours.

1.81 % of observed browsers are **Firefox 60.0**, as yours.

56.48 % of observed browsers run **Windows**, as yours.

20.53 % of observed browsers run **Windows 10**, as yours.

62.85 % of observed browsers have set **"en"** as their primary language, as yours.

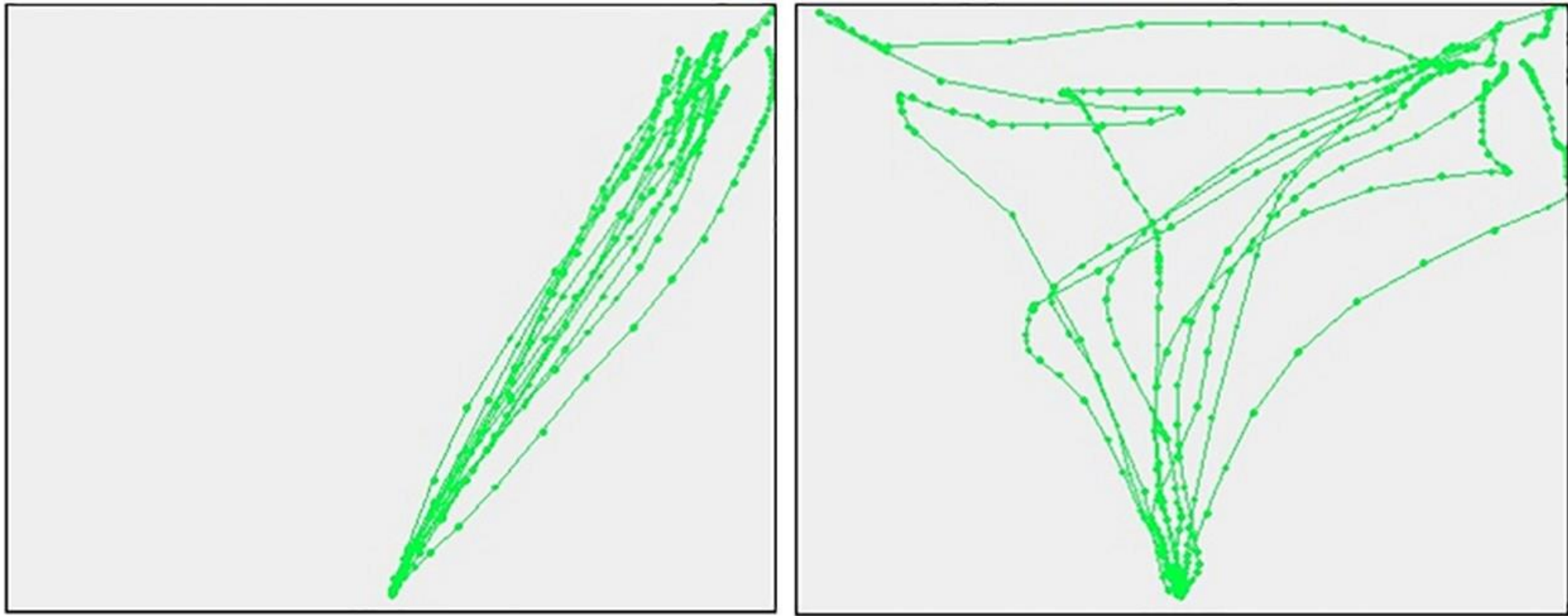
20.14 % of observed browsers have **UTC+2** as their timezone, as yours.

However, your full fingerprint is unique among the 754340 collected so far. Want to know why?

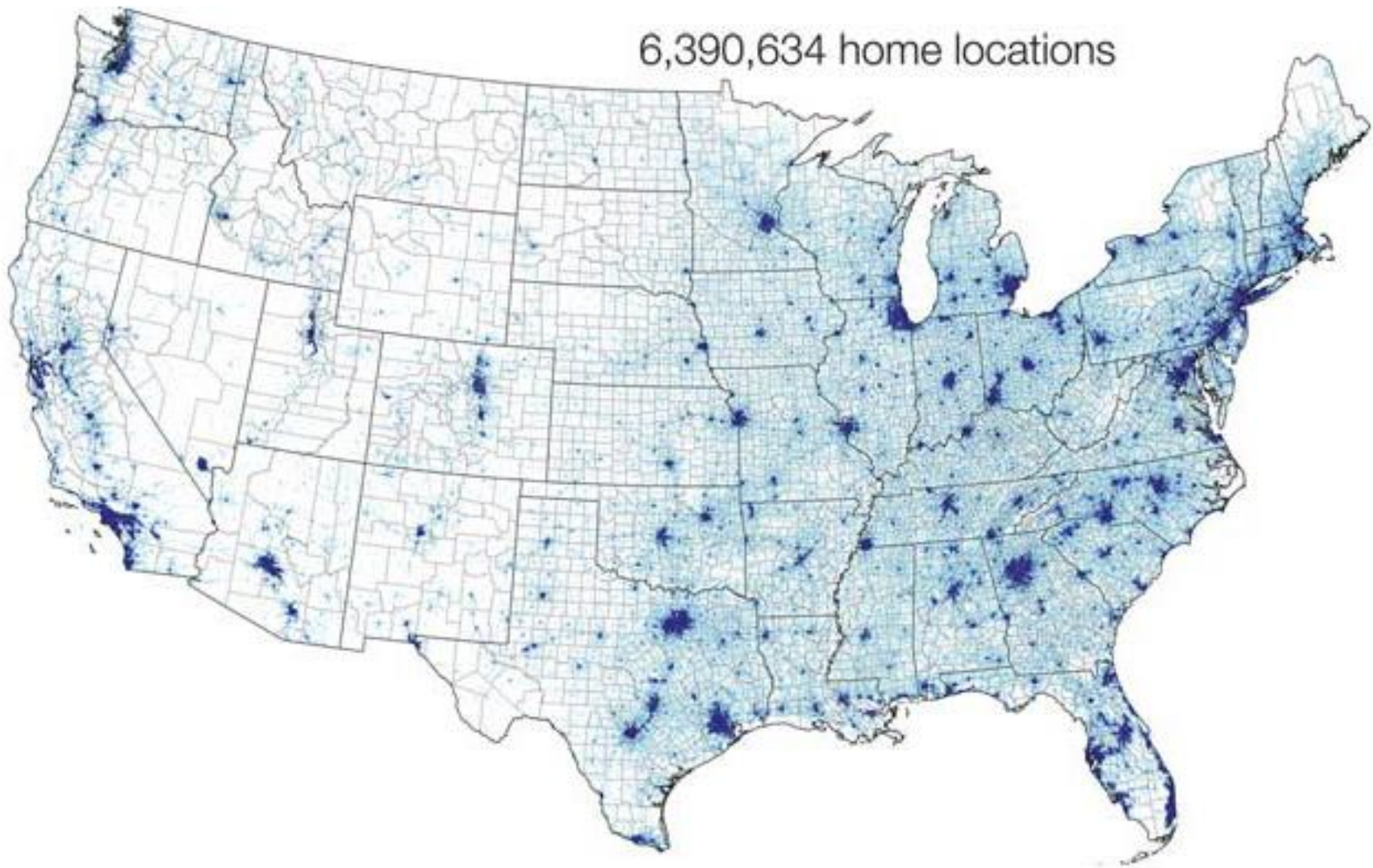
[Click here](#)

[View more details](#)

[View graphs](#)



Parameters that encode mouse movement were analyzed using machine learning classifiers and the results indicate that the mouse trajectories and errors on unexpected questions efficiently distinguish liars from truth-tellers. Furthermore, we showed that liars may be identified also when they are responding truthfully. Unexpected questions combined with the analysis of mouse movement may efficiently spot participants with faked identities without the need for any prior information on the examinee.



By downloading where these smartphones were located between the hours of 1 a.m. to 4 a.m., Chen and his research partner — Ryne Rohla of Washington State University — could infer where people in this database lived. To be safe, they tracked these locations over the three weeks leading up to Thanksgiving and made sure the readings were consistent.

Doing so identified 6.3 million probable homes. Repeating this computational trick for the hours of 1 p.m. to 5 p.m. on Thanksgiving revealed the places where people most likely spent their festivities.

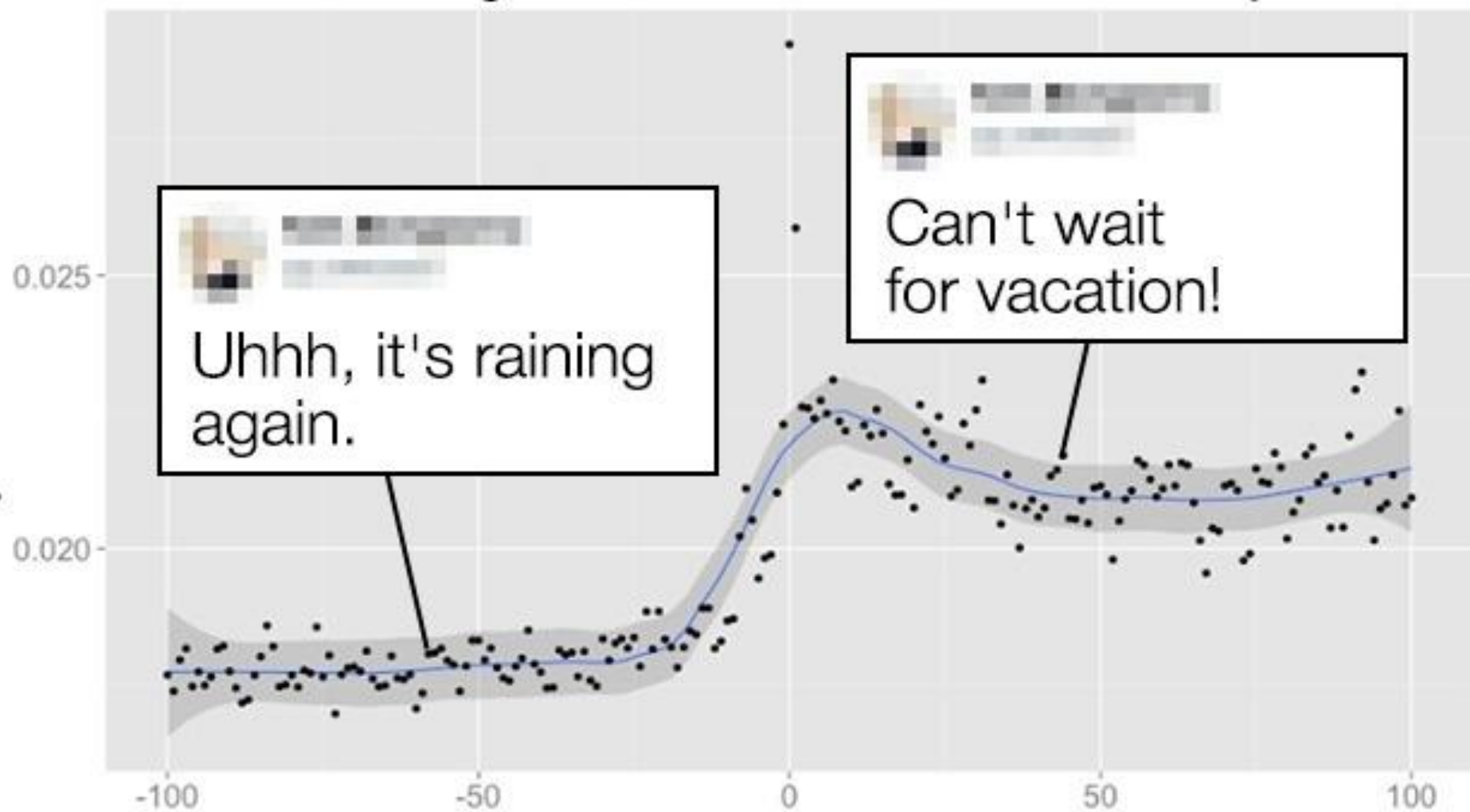
The team linked these home locations to precinct voting records, then made a big assumption. With these political leanings in hand, the team looked at how people from Democratic-leaning homes behaved when they visited a Republican household for Thanksgiving and vice versa. Chen and Rohla conducted this analysis for Thanksgiving in 2015 and 2016 to see how behaviors differed before and after the election.

Overall, members of both parties shortened their holiday trips by 30 to 50 minutes, though the team spotted subtle differences. Democrats were more likely to forgo Thanksgiving travel altogether in 2016. But GOP supporters were more likely to leave dinner early, spending about four percent less time at Thanksgiving than those across the aisle. Thanksgiving dinners are shortened by around 2.6 min on average for every 1,000 political advertisements aired in the traveler's home media market. This selective exposure — the tendency to avoid people who have different views — increased dramatically if folks hailed from a voting precinct exposed to tons of political ads. People from areas with a lot of political advertising cut close to 1.5 hours from their Thanksgiving celebrations. The study found that "Thanksgiving dinners are shortened by around 2.6 min on average for every 1,000 political advertisements aired in the traveler's home media market."

Single

In a relationship

Level of positive emotions



Days before/after the start of the relationship





Number of interactions compared to the relationship baseline



4:21 PM 100%

HISTORY



**SG SCORE**  
23  
out of 100

**YOUR RELATIONSHIP WITH MARCUS IS ON LIFE SUPPORT**

It's time to either pull the plug, or make some serious adjustments to revive your relationship.

**YOUR INDIVIDUALIZED SCORES**



# Location heatmap



Meraki Access Points also detect the signal strength of data frames and probe requests, which can be used to estimate the physical position of the WiFi devices.

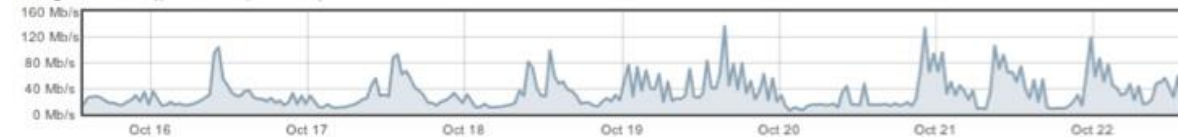
In this paper, we propose an indoor positioning system which achieves centimeter accuracy and maintains the performance under non-line-of-sight scenarios using a single pair of off-the-shelf WiFi devices. By harvesting the inherent diversity in WiFi systems, the proposed indoor positioning system formulates a large effective bandwidth to provide a fine-grained location-specific fingerprint with a much higher resolution compared with the fingerprints in most WiFi-based indoor positioning systems.

## Traffic report for the last week

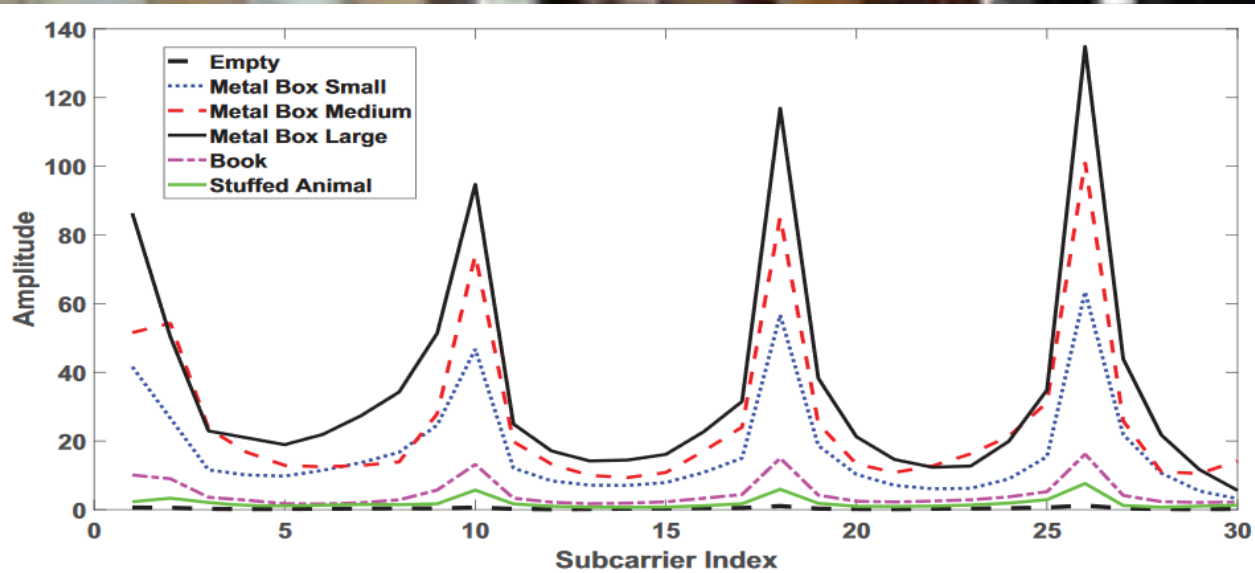
Client counts approximately 1003 unique clients



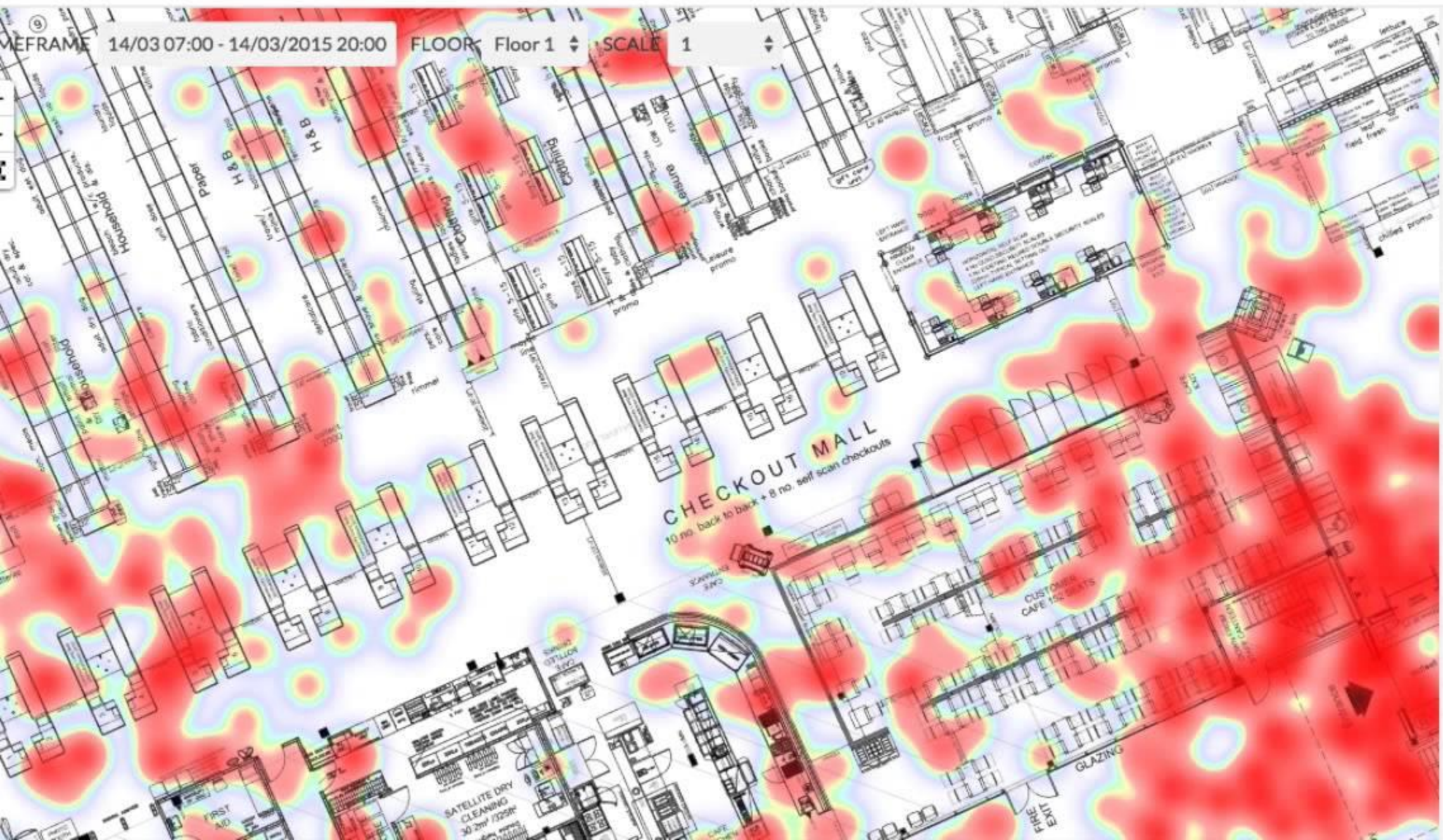
Usage 8.19 TB (↓ 3.96 TB, ↑ 4.23 TB)



Rule	Destination	Protocol	Port	%	Usage	Sent	Received	Flows	Active time	# clients
Google HTTPS	-	-	-	0.8%	70.96 GB	20.05 GB	50.91 GB	1549780	14 months	473
Gmail	-	-	-	0.6%	46.65 GB	12.64 GB	34.02 GB	538136	8.1 months	384
Facebook	-	-	-	0.1%	6.49 GB	800.9 MB	5.71 GB	231195	35 days	355
YouTube	-	-	-	0.4%	30.81 GB	1.53 GB	29.27 GB	26584	8 days	303



# HEAT MAP



30 min ⬇

- 7:00 AM
- 7:30 AM
- 8:00 AM
- 8:30 AM
- 9:00 AM
- 9:30 AM
- 10:00 AM
- 10:30 AM
- 11:00 AM
- 11:30 AM
- 12:00 PM
- 12:30 PM
- 1:00 PM
- 1:30 PM
- 2:00 PM
- 2:30 PM
- 3:00 PM
- 3:30 PM
- 4:00 PM
- 4:30 PM
- 5:00 PM
- 5:30 PM
- 6:00 PM

PAUSE ||



INDY/TECH

# AI CAN PREDICT A CITY'S OBESITY LEVELS FROM ITS BUILDINGS





*That's all Folks!*

*Marko Rakar*

*@mrak*

*mrakar@mrak.biz*

*<https://www.linkedin.com/in/markorakar/>*