

Developing Custom SonarQube Rules for Java

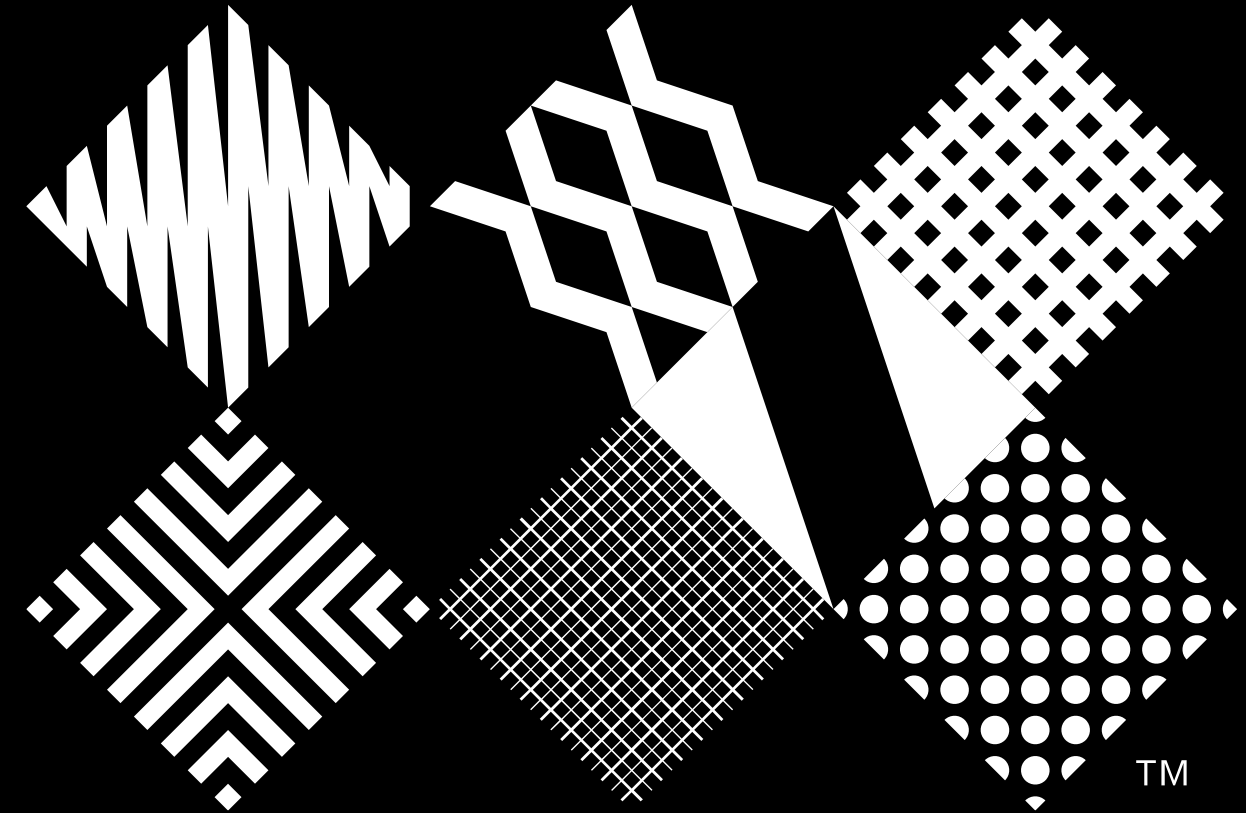


—
JavaCRO 2022, Autumn
10.10.2022

Your presenter



Martin Gluhak
Java/AEM Developer
martin.gluhak@ibmix.hr



Our agenda

- 1) Introduction
- 2) Custom rules used in IBM iX
- 3) Live demo
- 4) Developing custom Sonar rules
- 5) Q&A



Introduction

Why should we use SonarQube?


How can we improve it?

Rules based on IBM iX guidelines

- Add additional rules that suit your project needs
- Make sure specific guidelines are being followed in your teams
-

<https://github.com/IBM/ibm-ix-aem-sonarqube-plugin>

IBM iX Sonar rules for AEM development

 quality gate **passed**

Contents

This repository contains free-to-use custom Sonar rules designed specifically for AEM development based on internal IBM iX company guidelines. [Adobe Experience Manager \(AEM\)](#), is a comprehensive content management solution for building websites, mobile apps and forms. The rules can be easily added to [SonarQube](#) and used on your AEM project to help improve the overall code quality. Currently, only Java specific rules are in scope of this project.

Installation

Manual

1. Download the latest *jar* file from the releases section
2. Place it into your SonarQube installation directory under `/extensions/plugins`
3. Restart the SonarQube instance

Sonar Marketplace

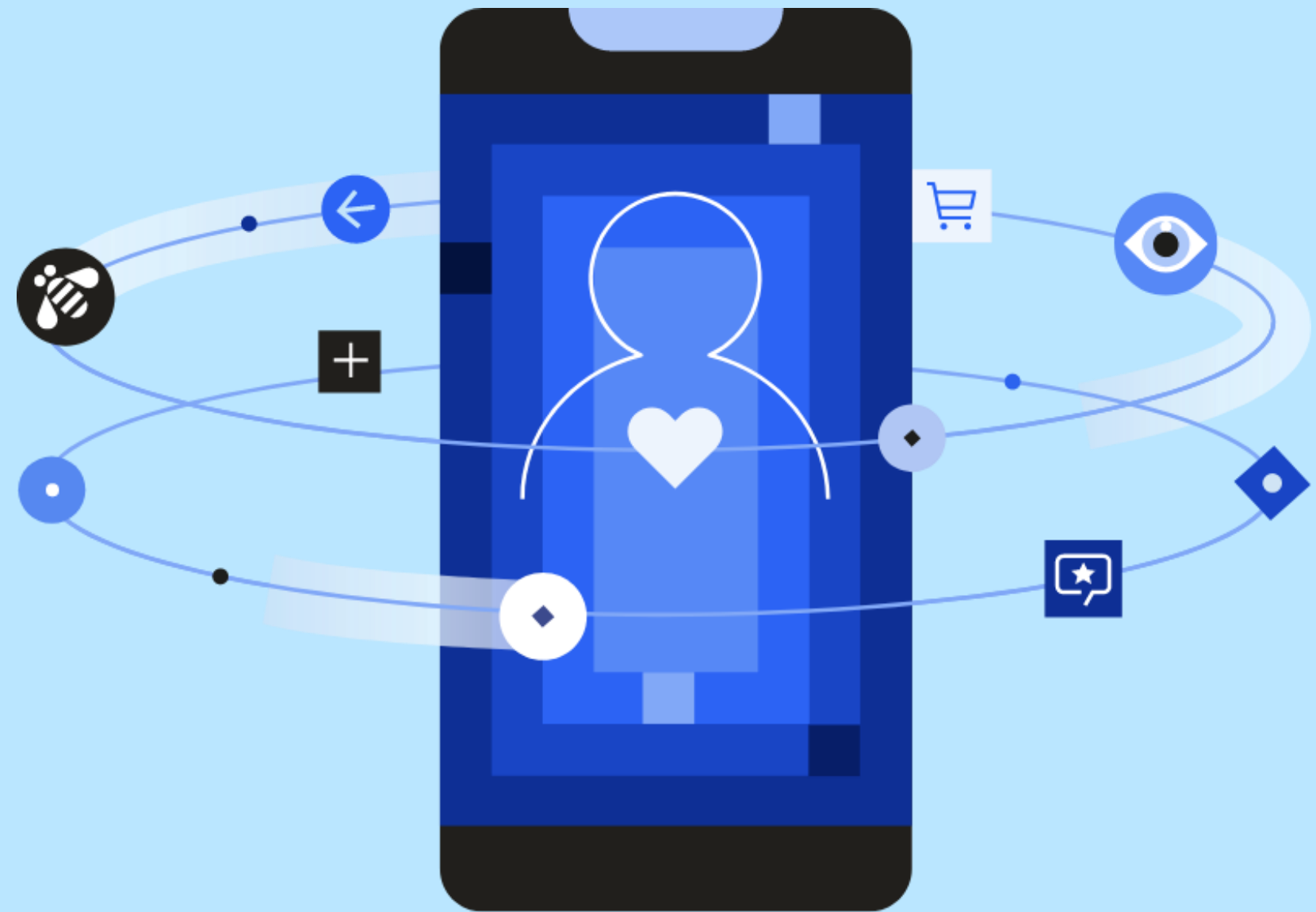
1. Using the SonarQube Administration panel open the Marketplace section
2. Under the plugins subsection, search for `IBM iX AEM Sonar rules` and press install
3. Restart the SonarQube instance

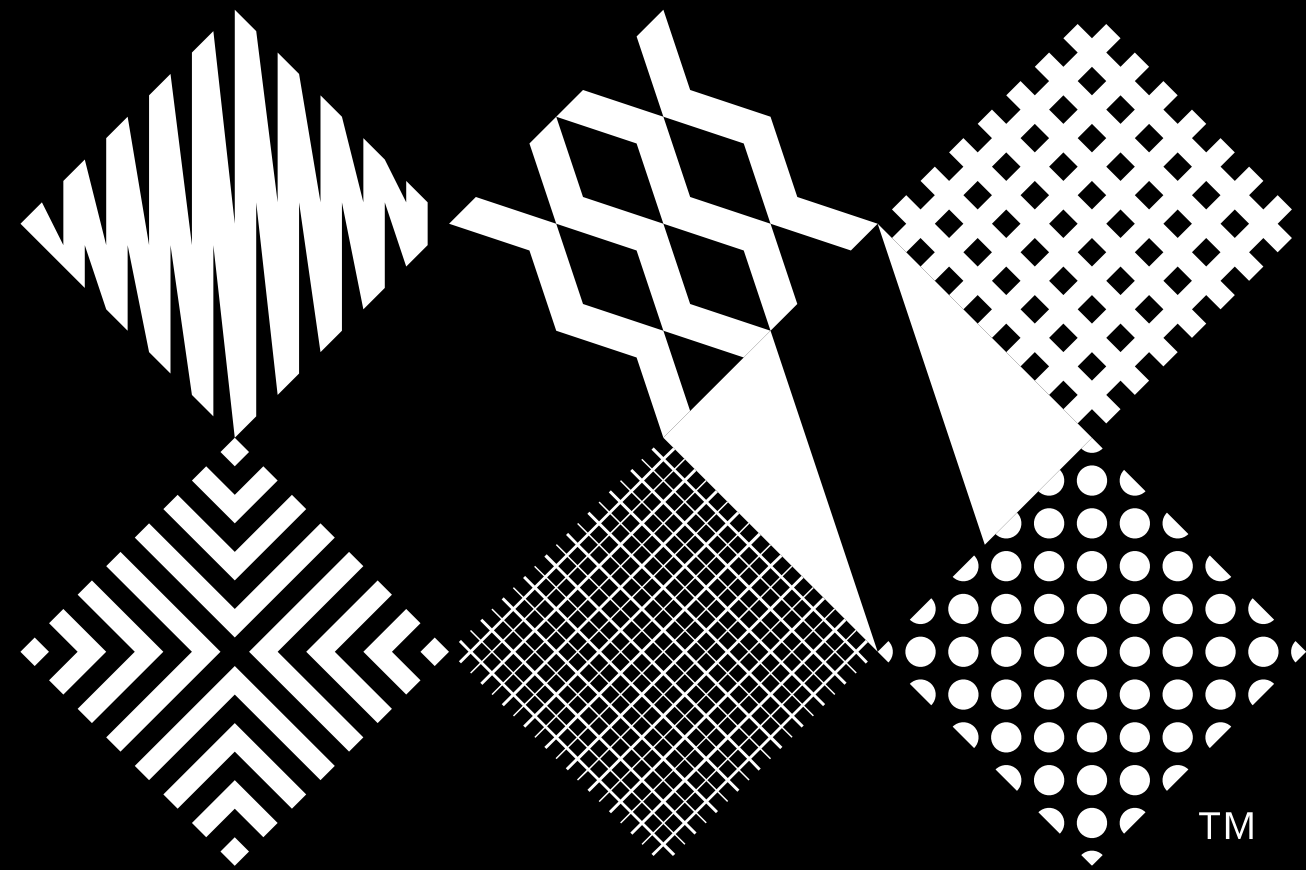
Live demo

How to create your own, custom
Sonar rules for Java?

That's all from me
It's time for your questions...

Visit us @ our booth &
get a chance to win a
ticket for the JavaCro
conference 2023!





TM